



## **COURSE REPORT**

Golf services meeting on 11<sup>th</sup> of October 2011

### **GREENS (Leading into Course Renovations):**

The greens have been getting cut 4-5 times a week at 3mm in height. My program with fertility, water management and growth regulating will be aimed at not getting to much excessive growth.

I have been slowly drying the greens out and have cut back on their fertility. This is proving to show that we have a better playing surface with the greens starting to firm up. During the month of September the greens got verti-cut (dethatched) twice in different directions, which will not only speed the greens up but also make them a lot healthier and putt a lot truer.

The Fungicide program has started with preventive applications for pythium and dollar spot being applied, this program is one of the most important parts of the greens maintenance, due to our climate and heavy traffic during the warmer months. An application of primo maxx which is a growth regulator has been applied at half rates 2 weeks prior to the week of golf; this product suppresses the Poa giving us a better surface and less vertical growth for 3-4 weeks.

The green speeds have been measured and will get done each week to give myself a gauge on where we are at. First reading was 8 foot on the stimp metre taken early in the month. Second reading was taken on 30/9/11 and we measured a nice 9 ¾ foot which I believe is getting close to a good all round pace. Greens speeds will always be a very important part of my program but sometimes out of my control due to the weather conditions. I have a big challenge ahead of me on the front nine trying to get all the greens to same pace/surface due to the resurfacing program.

### **BENT GRASS NURSERY:**

The bent grass nursery has established quite well and will be used to plug any bare patches in greens and be a back up if for some reason we lose any turf on our greens.

### **FAIRWAYS & TEES:**

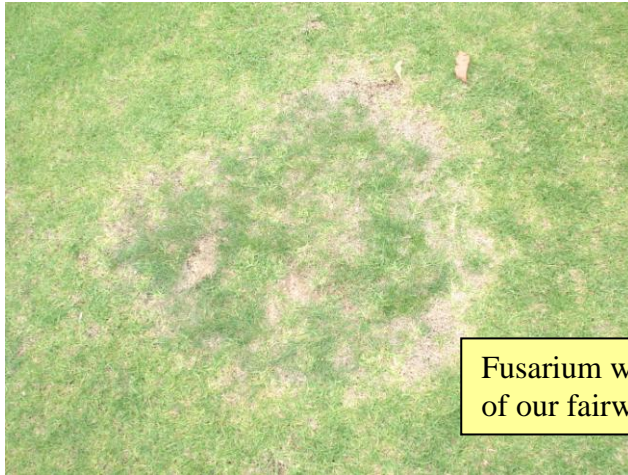
Fairways are being cut once a week at 15mm in height and will increase to twice a week as it warms up and we get more growth. All tees are being cut twice a week at 11mm ( lines are being burnt in) and this will continue till the Week of Golf is over then we will have the cool season tees cut at 13mm and the kikuyu tees at 11mm .

All tees and fairways have had an application of fertilizer at the start of September which we are now starting to see some good results in growth and colour.

Sprayed all broadleaf weeds from tree line to tree line, this has cleaned up a lot of the clover which has increased in numbers from previous years due to the wetter months we have had.

A disease called 'Fusarium' has been in the fairways for quite a few years now and is getting worse. Culture control including coring or verti-draining and dethatching will help solve this problem in the future making

sure the plants roots get oxygen - also an annual application of Gypsum needs to be applied to counteract our effluent water.



Fusarium which is in most of our fairways.

### **KIKUYU NURSERY:**

The kikuyu nursery has been getting a fair workout, using the sod for ends of paths and bad bunker exit so once it runs out we will have to wait for the kikuyu to re-establish.

### **ROUGH:**

Rough has not been cut yet and is still very slow to grow due to kangaroos chewing on it 24/7 and just coming out of winter. I plan to go over the course once before the week of golf especially after the rain we have received this should give it a bit of a boost. A broadleaf herbicide will be sprayed in the rough beyond the tree line after the Week of Golf due to the time it takes to apply.

A good aspect of rough is it gives you good fairway definition but not in our case unless we get a good summer. We have several things stopping us from getting that definition.

- Trees sucking all the moisture out of the edges  
(Solve by having a proper root pruning programme)
- Irrigation is very poor the further away from the middle of the fairway you get due to the design of the system.  
(Solve by running a line of sprinklers in between the trees and fairway edge)
- Kangaroo eating any good growth
- No fertilizer being applied to it in the last 10 years, therefore it is not a healthy happy plant  
(Solve by including it into the yearly program)

\* These problems cost money to solve but all can be achieved if a plan is in place.

### **PATHS:**

A 34 meter concrete extension has been added to the path at the 6<sup>th</sup> tee. Big thanks to the Club Member who donated the funds and to both Daryl Cook and Jason Small for their very professional job. The boys worked a few tireless days saving the club a few bucks.

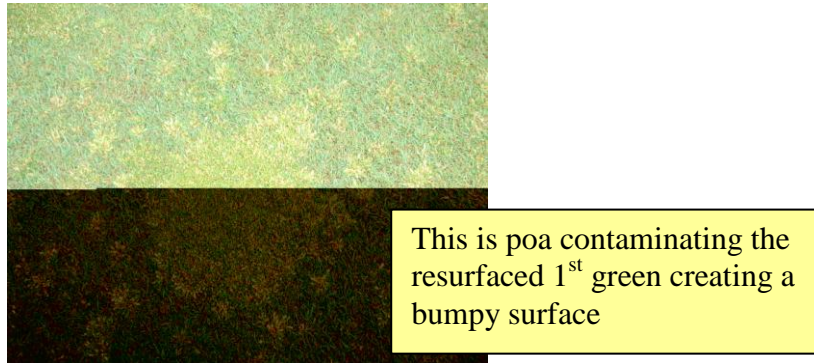
### **RESURFACING PROGRAM:**

I strongly believe that it is NOT a smart move to keep the resurfacing program going. At the moment we have 5 different surfaces on the front nine. For golfers, it is very frustrating playing on 5 different greens and as a greenkeeper it is also very frustrating trying to produce a quality true surface during the transition period, and in the long run it will go back to being a dominant *Poa annua* green unless the *poa* is controlled which would not be cost effective. I recommend we work with the *Poa annua* greens with regular culture practises including:

- Verti-cutting
- Dusting with a medium grade sand (like a really light top-dress)

- Verti-drain with solid tines
- Better water and fertility programs

These practices will also encourage what bent grass we do have in our greens to increase in population to make our surface not only better for the golfer but more disease and pest resistant with better heat tolerance over the summer,



**WEATHER:**

In September we have had only 11mm of rain which has been the second driest September in the last 13 years. This year to date we have had 521mm over 113 days. The days have been warming up with the average low temp at 7.2 degree Celsius and average high temperature of 19.1 degree Celsius. The coolest morning was on the 7<sup>th</sup> recording 2 degrees and the hottest day was the 14<sup>th</sup> which got to 25.3 degrees.

*Patrick Wilson [Course Superintendent]*